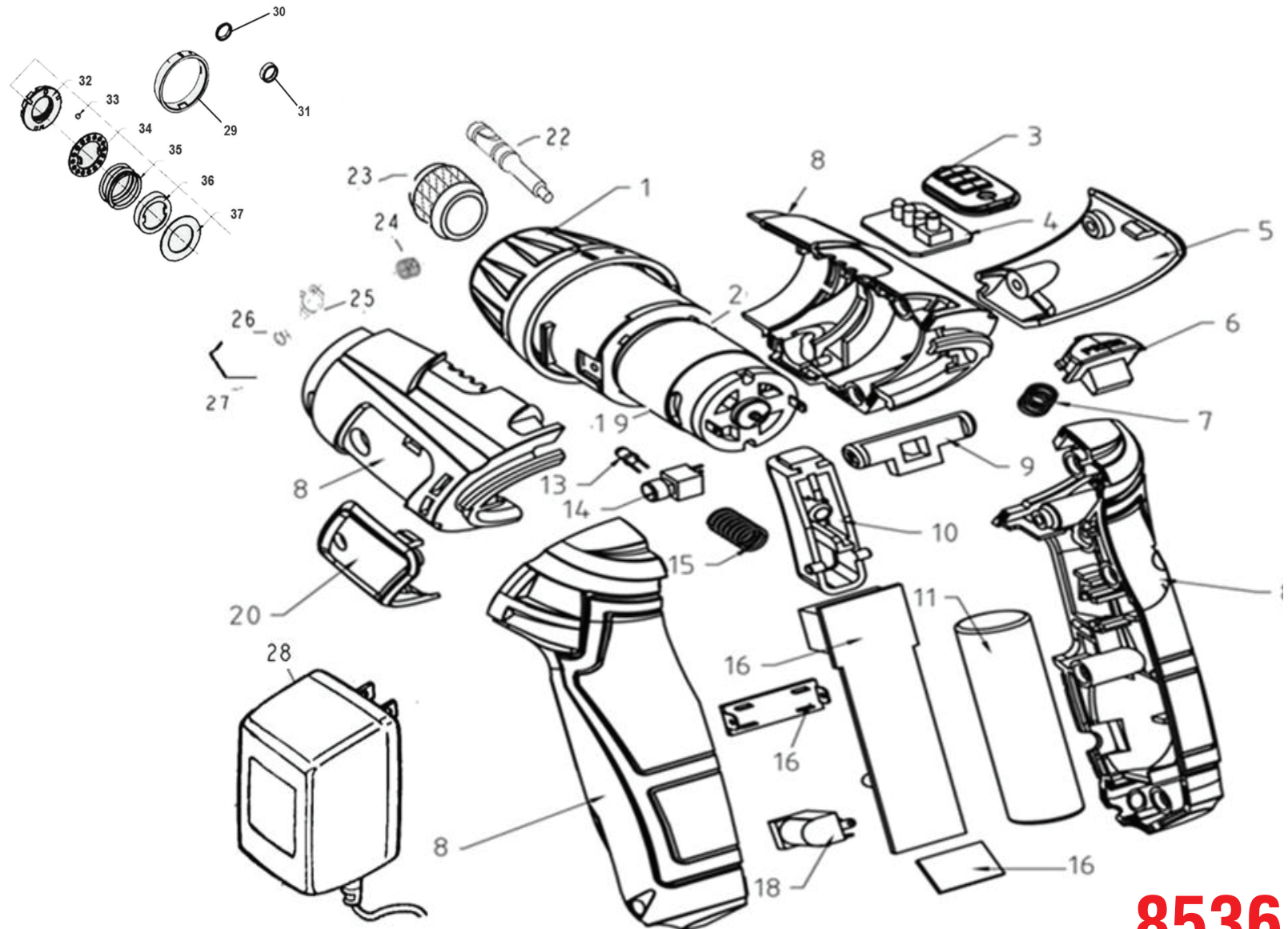


Name	Number
1	Torquemeter
2	Gearbox
3	open cover
4	Power directive
5	Middle shell
6	Twist Lock
7	lock spring
8	shell set
9	right/left butter
10	switch
11	Li-on battery
13	lighting
14	light switch
15	switch spring
16	Li-on battery PCB
18	CHARGER
19	Motor
20	mid-bottom shell
22	shaft
23	bit holder chuck
24	spring
25	circlip
26	circlip
27	circlip
28	Adaptor
29	spring
30	spring base
31	washer
32	torquemeter index
33	circlip
34	spring
40	BMC (with bits)
42	BMC (without bits)



8536

Foldable Cordless Screwdriver 3.6V