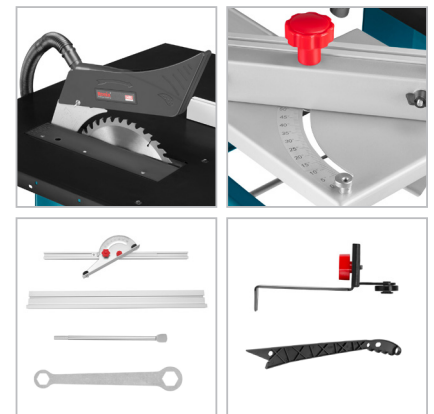


Electric Table Saw
2000W-315mm

5605

- Powerful 2000W motor delivers 2950 RPM for maximum productivity and top performances in different functions
- Made from high quality material which secures precise cutting in different angles and applications
- Adjustable dual side guards with new design, facilitates cutting in different functions
- Efficient dust collection system enables clean operation
- Large on and off Switch
- Saw blade enclosed underneath the table to protect the blade during transport
- New guard design allows the operator to view the blade as it contacts the material
- 0° To 45° precision machined table top remains flat and true for accurate cuts
- Easy portability



Model	5605
Power	2000W
Voltage	220-240V
Frequency	50Hz
No-Load Speed	2950RPM
Cutting Disc Diameter	315mm
Blade Size	Φ315×3×Φ30mm 40Z
Max Cutting Capacity	0°: 83mm, 45°: 50mm
Table Size	800×550mm
Pulling Extension Table	800×400mm
Sliding Extension Table	964×685mm
Tilt Range	0° To 45°
Table Material	Q235A Steel
Dust bag Size	with dust pipe, no dust bag
Number of Wheels	2PCS
Wheels Material	PVC+Rubber
Total Length (mm)	1734mm (with sliding table)
Weight (N.W)-Table saw	48Kg
Weight (N.W)-Table saw Sliding table	6Kg
Supplied In	Ronix Color Box
Includes	Saw blade 1pc, wrench 1pc, angle ruler 1set, guide ruler 1set, push rod 1pc; dust pipe 1pc, wheels 2pcs, hook 1pc